

CHESAPEAKE

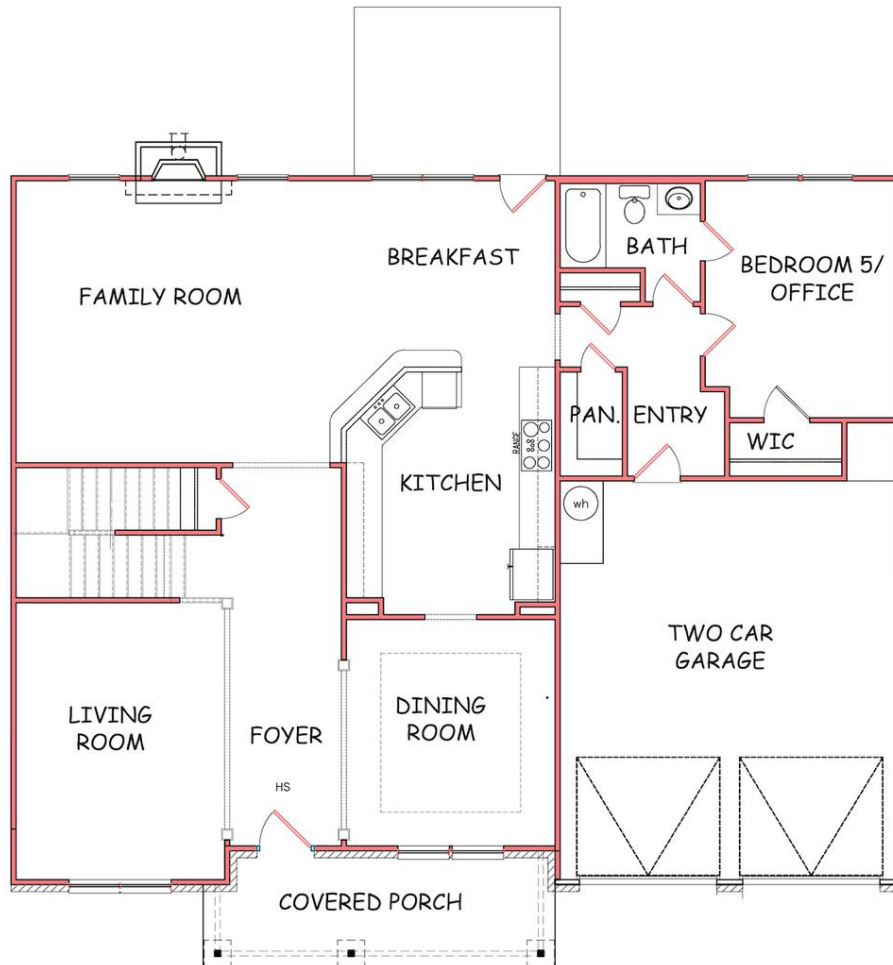


You'll love the inviting design the Chesapeake plan offers. The foyer leads you past the formal living and dining area and into the open family room. The thoughtfully designed kitchen provides you with the perfect place to prepare meals for your guests or whip up a quick dinner. A bedroom is located on the first floor, an ideal space for an office or guests. Upstairs are three bedrooms and the spacious owner's suite.

HOME DETAILS: SINGLE FAMILY



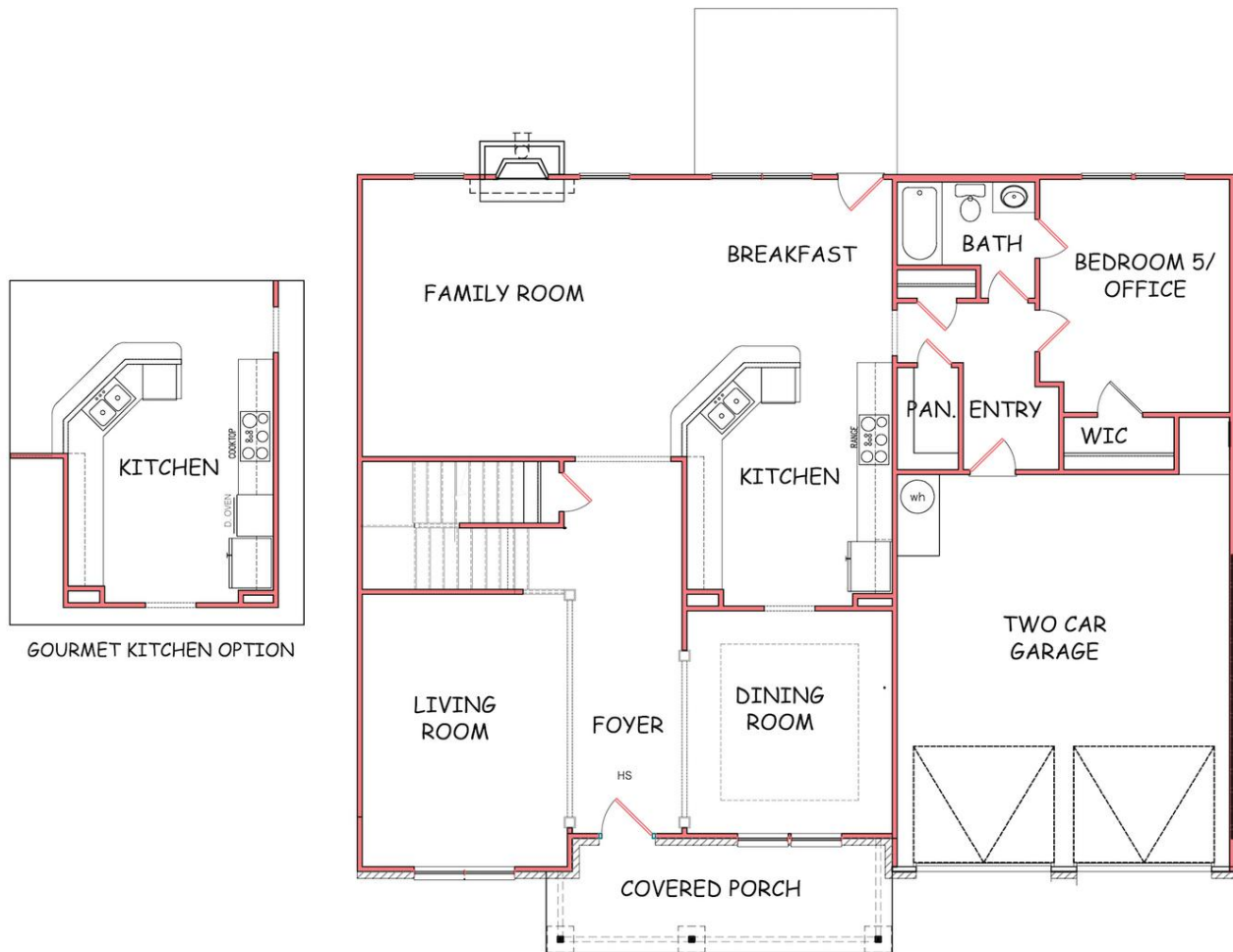
FLOORPLAN



FIRST FLOOR



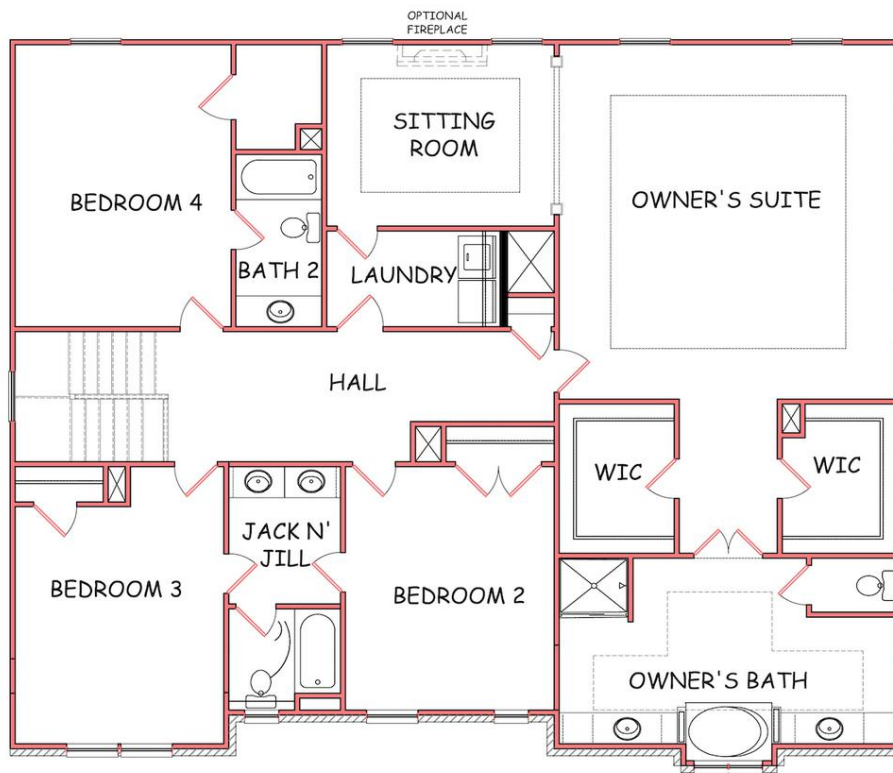
FLOORPLAN



FIRST FLOOR OPTIONS



FLOORPLAN



SECOND FLOOR

