

HUNTER RIDGE

100 Fish Camp Road
Easley, SC 29642



MIRA

The Mira offers the space your family needs to easily unwind or entertain. You will love the modern, open concept design that freely transitions from the family room to the kitchen area. Bonus alert: this plan is complete with two owner's suites (one upstairs and one downstairs) and an upstairs loft area.

HOME DETAILS:

\$323,990



4



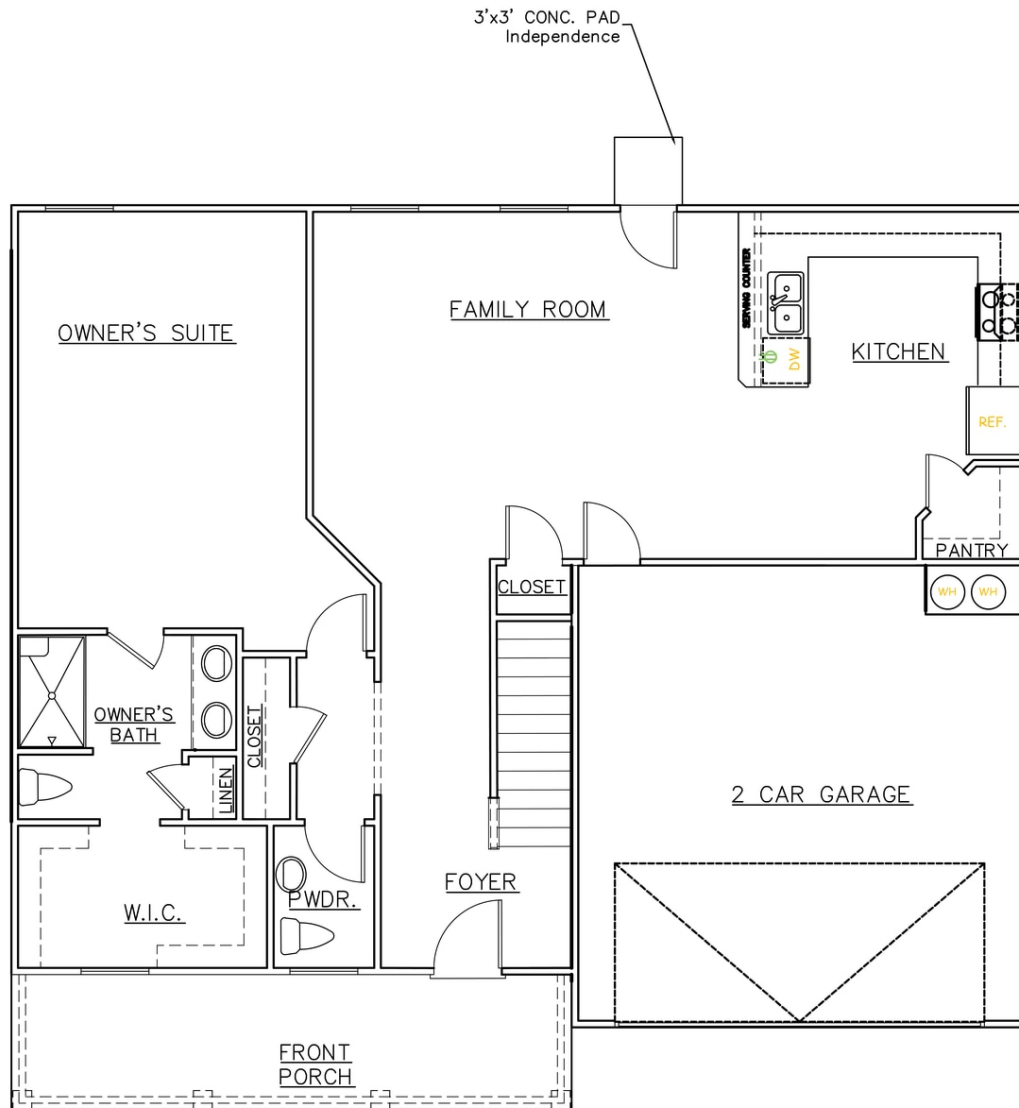
3.5



2700



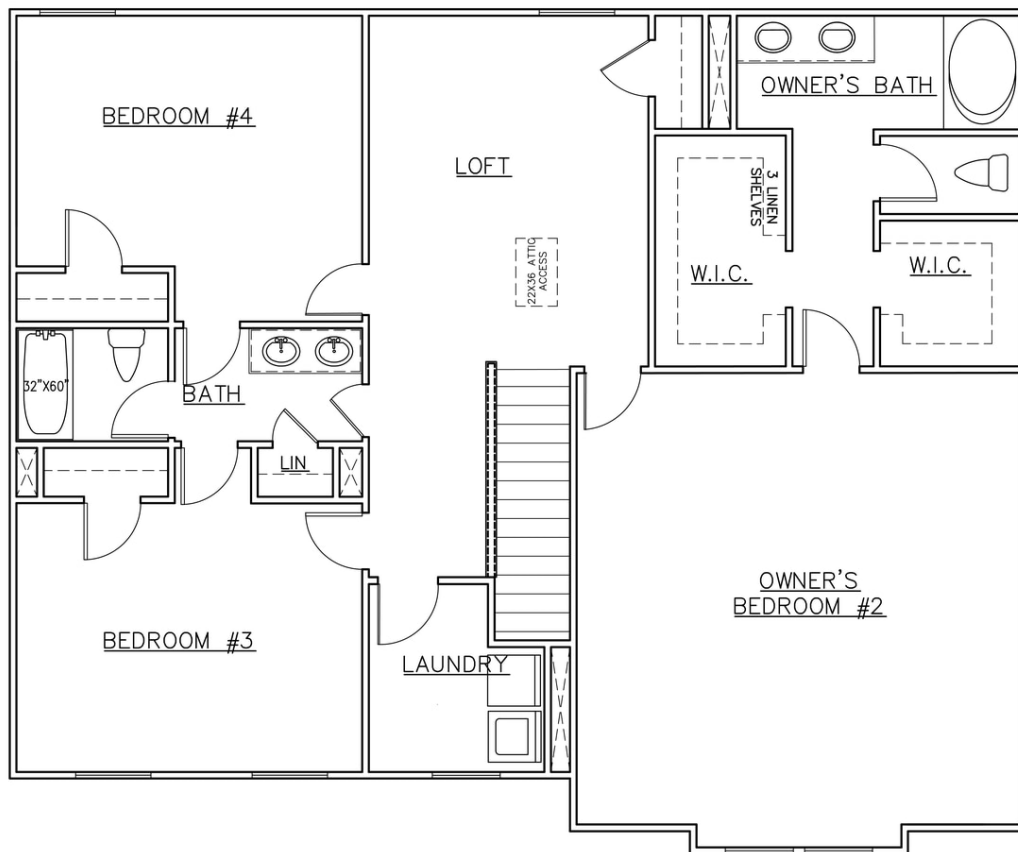
FLOORPLAN



FIRST FLOOR



FLOORPLAN



SECOND FLOOR

