

TWIN BRIDGE AT GRASSY POND

1255 Twin Bridge Rd
Gaffney, SC 29341



JODECO FP

The modern, open concept design of the Jodeco allows families to easily spend time together or spread out. Upstairs you'll find three bedrooms and the spacious owner's suite. A flex room is located on the first floor and can be used as a bedroom, office, dining space and more. You will love the thoughtfully arranged kitchen which offers a view to the dining and living area.

HOME DETAILS:

\$330,990



5



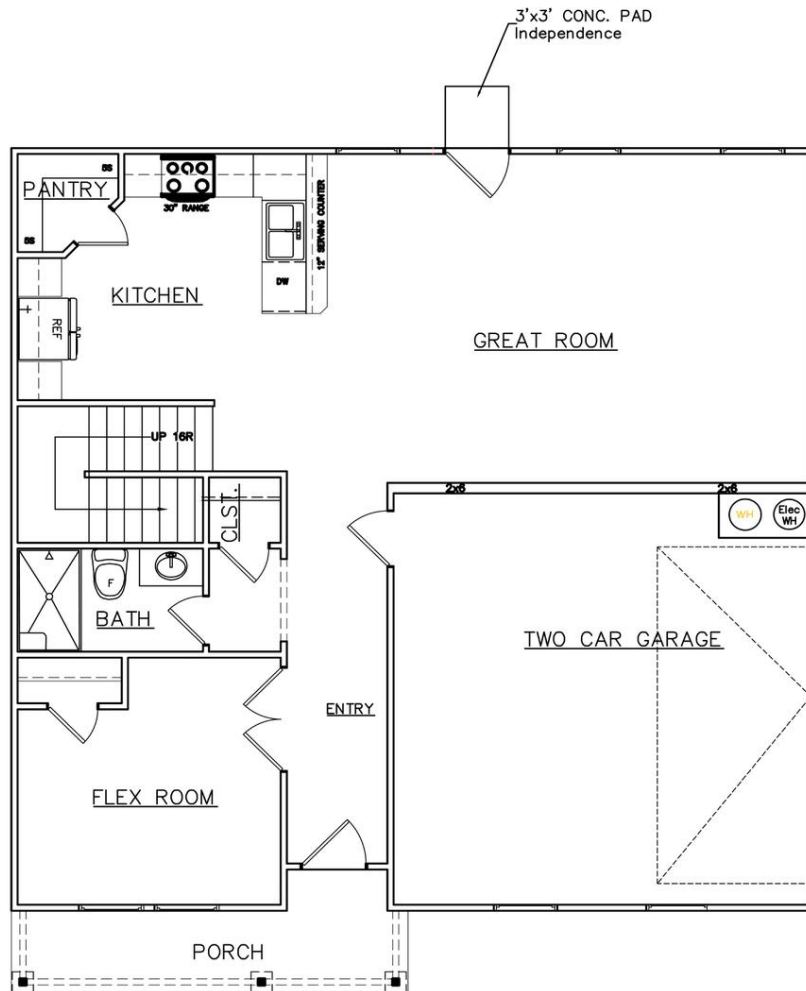
3.0



2315



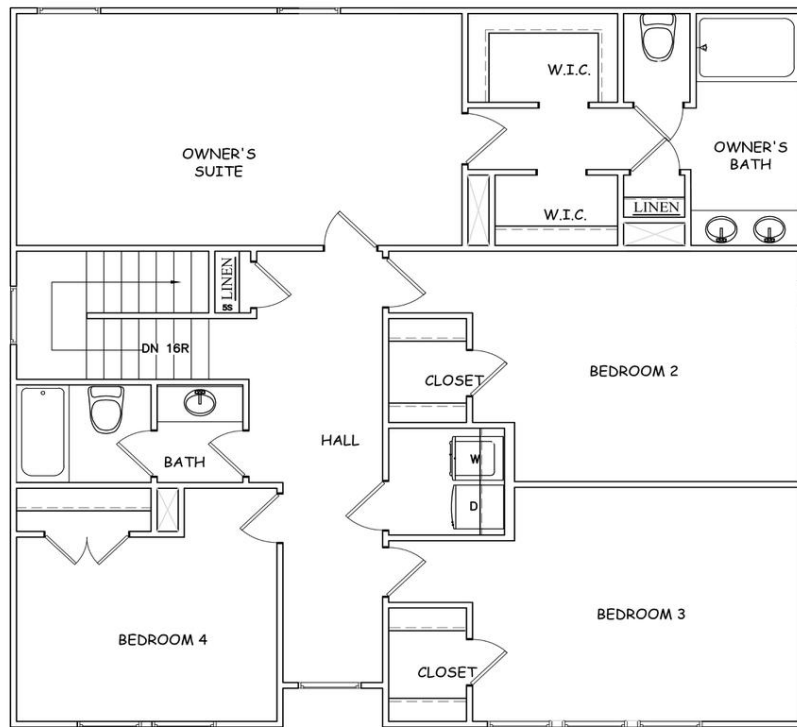
FLOORPLAN



FIRST FLOOR



FLOORPLAN



SECOND FLOOR

